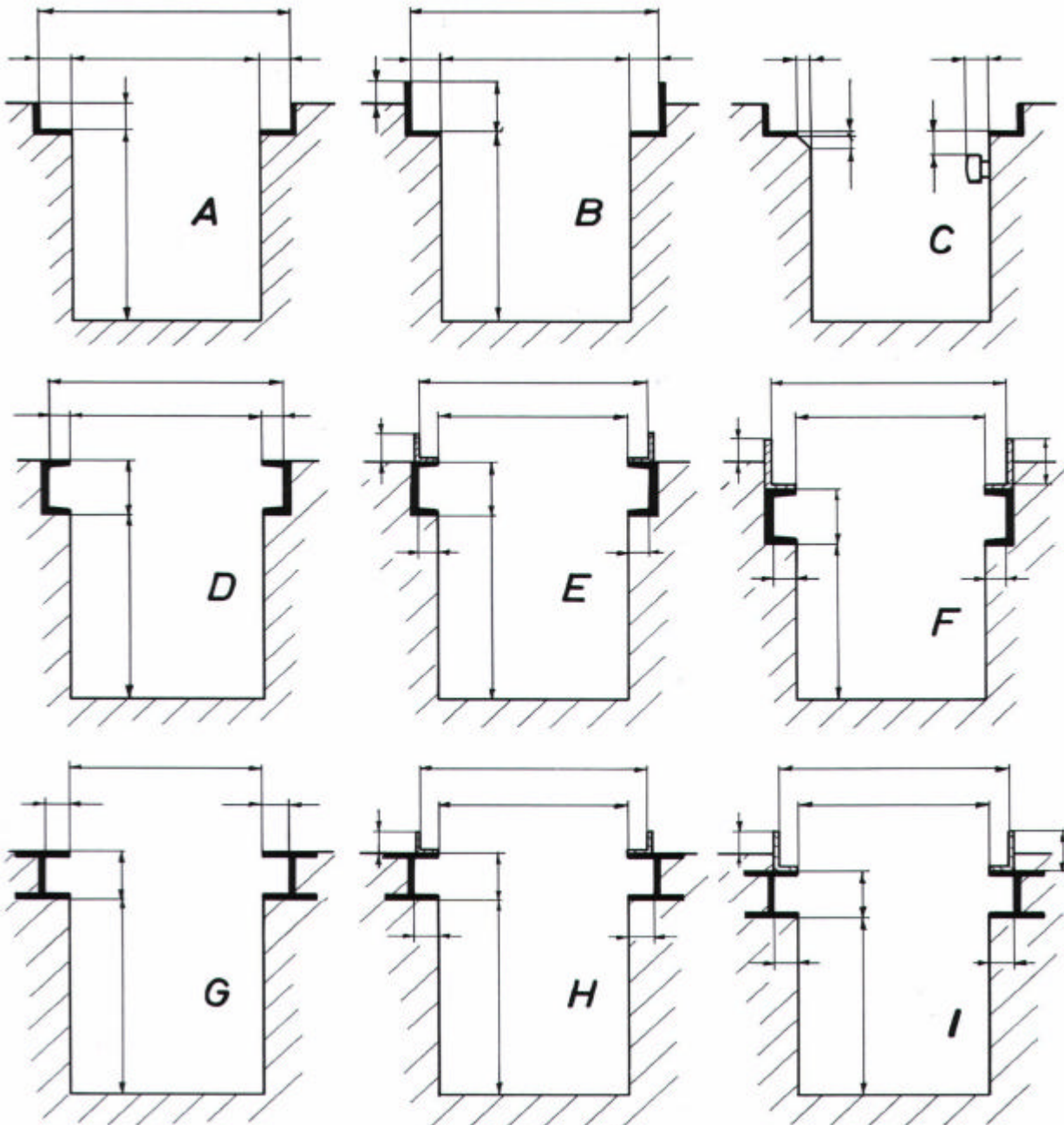


# Pit measure sheet for pit lift and supporting bridges



Gartenfeldstrasse 17  
54427 Kell am See  
Telefon 06589/91780  
Telefax 06589/917820  
[info@kirsten-hebezeuge.de](mailto:info@kirsten-hebezeuge.de)  
[www.kirsten-hebezeuge.de](http://www.kirsten-hebezeuge.de)  
[www.grubenheber.de](http://www.grubenheber.de)



Pits A and B

Pits D, E, F

Pits G, H, I

Angel steel DIN 1028 or EN 56 – 62

U – Steel DIN 1026 or EN 24 – 62

I - Steel DIN 1025 or EN 19,57, 53 – 62

At pits with projecting lamps, tubes or tiles please enter after pattern C.  
By from pattern deviated pits please make a measure sketch and enclose it.

**Remark:** By construction and planning from an pit please demand our recommendation for execution from pits.