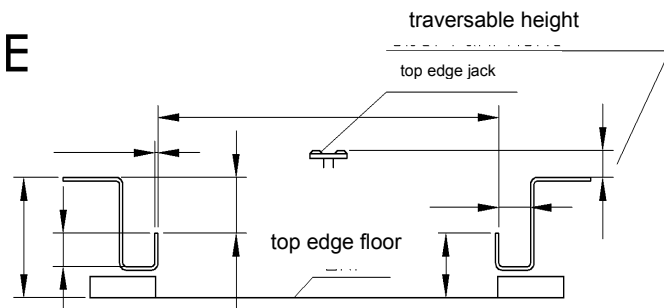
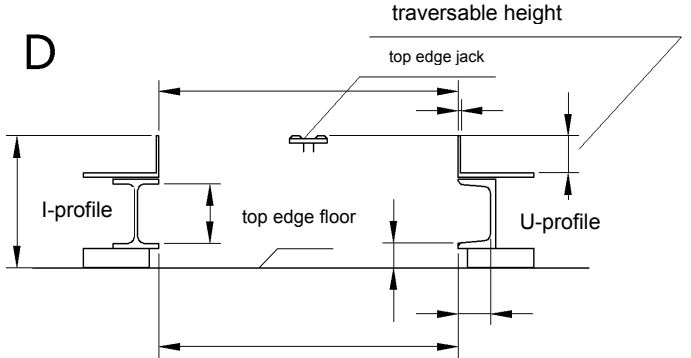
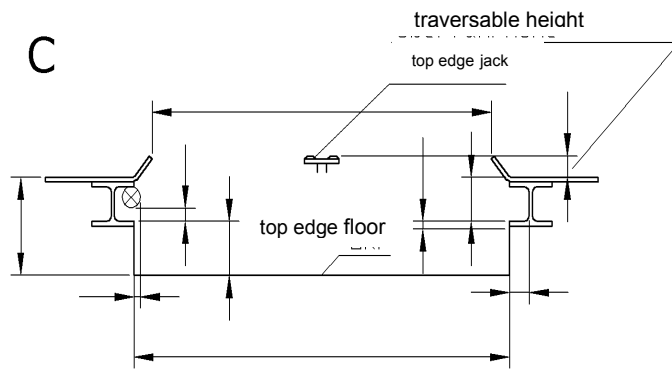
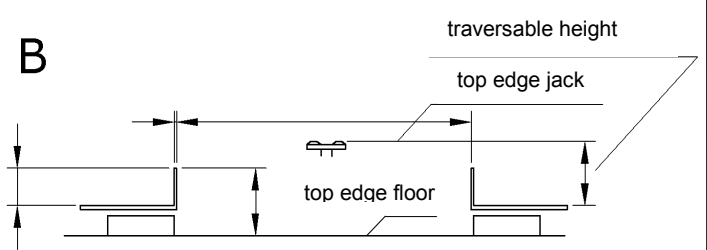
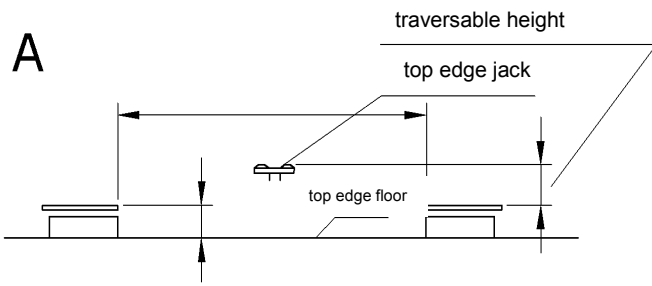
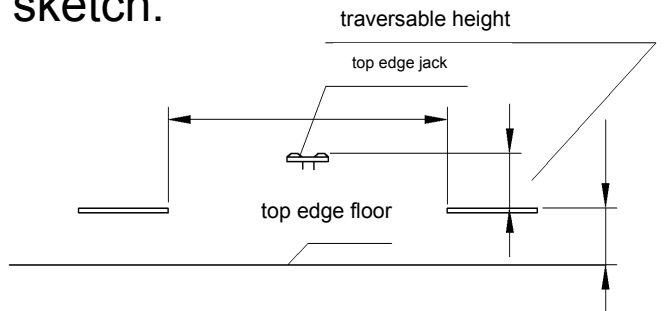


Dimension Sheet for Jack Beams on Vehicle Lifts

All details in mm!



sketch:



carriage rolls

- cylindric
- SRK conical 4,5° inclination standard rolls
- flange rolls (thickness of spur post / profile)

- pit A** track without spur post
- pit B** track with spur post
- pit C** track with spur post skewed
- pit D** U-steel DIN 1026 or EN 24 - 62 (conical rolls required)
- or** I-steel DIN 1025 or EN 19, 57, 53 - 62
- pit E** curved profile

For vehicle lifts with protruding lamps, pipes or similar please use installation situation **C**.
For installatons that differ from the situations above please do and attach a technical drawing.

note: Please state the manufacturer of the vehicle lift including the correct type designation!