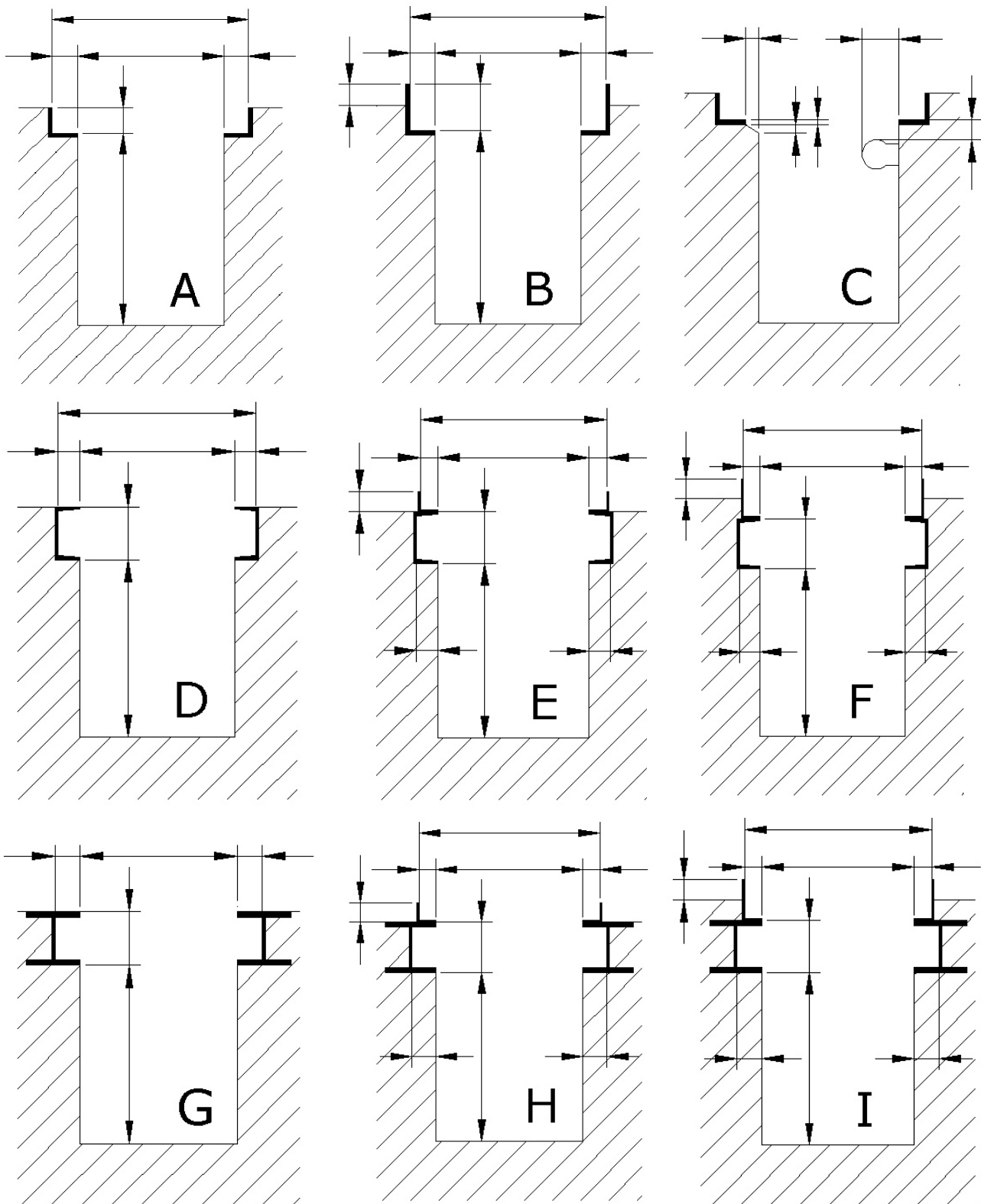


Dimension Sheet for Pit Jacks and Supporting Bridges

All details in mm!



pits A und B
pits D, E, F
pits G, H, I

angle steel
U-steel
I-steel

DIN 1028 or EN 56 - 62
DIN 1026 or EN 24 - 62 (conical rolls required)
DIN 1025 or EN 19, 57, 53 - 62

For pits with protruding lamps, pipes and tiles please use installation situation C.

For installation situations that differ from the situations above please do and attach a technical drawing.

note: If you plan or construct a working pit please request our recommendations for the construction of working pits.

Please measure the working pit at several points in the working range, at the beginning and the end!