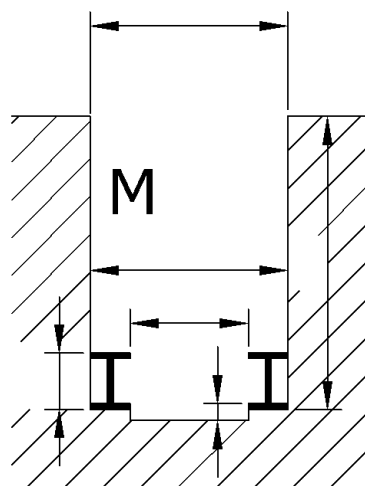
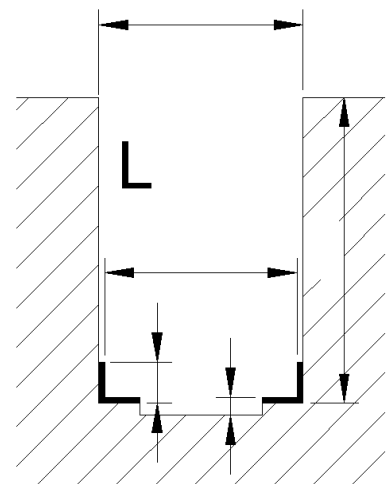
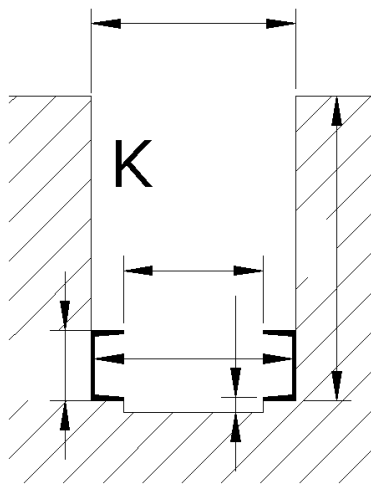
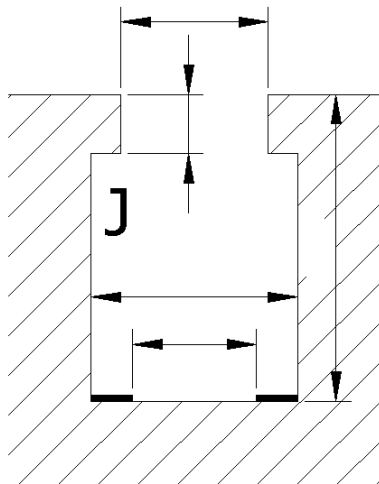
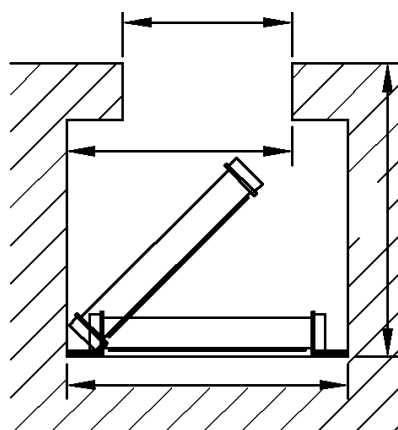


Dimension Sheet for Pit Jacks and Supporting Bridges

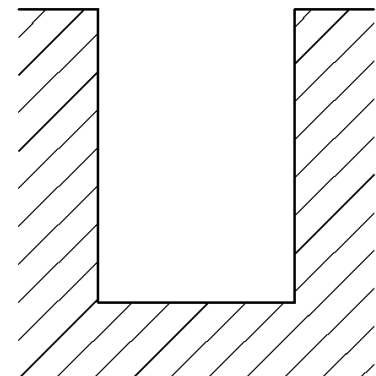
All details in mm!



mounting
pit jack floor-running



layout



carriage rolls

- cylindric
- SRK conical 4,5° inclination standard rolls
- SRK conical 8° stronger inclination from U 300 on
- SRE turned-in rolls
- VRZ prolonged wheel pivot
- external rolls / rolls without roller collar with guide rolls
- special rolls

additional information

- opened pit for insertion available
- pit with cover
- pit with hanging oil wagon

- pit J** flat steel 80 x 10
- pit K** U-steel DIN 1026 or EN 24 - 62 (conical rolls required)
- pit L** angle profile
- pit M** I-steel DIN 1025 or EN 19, 57, 53 - 62

For pits with protruding lamps, pipes and tiles please use installation situation C.
For installation situations that differ from the situations above please do and attach a technical drawing.

note: If you plan or construct a working pit please request our recommendations for the construction of working pits.
Please measure the working pit at several points in the working range, at the beginning and end!